

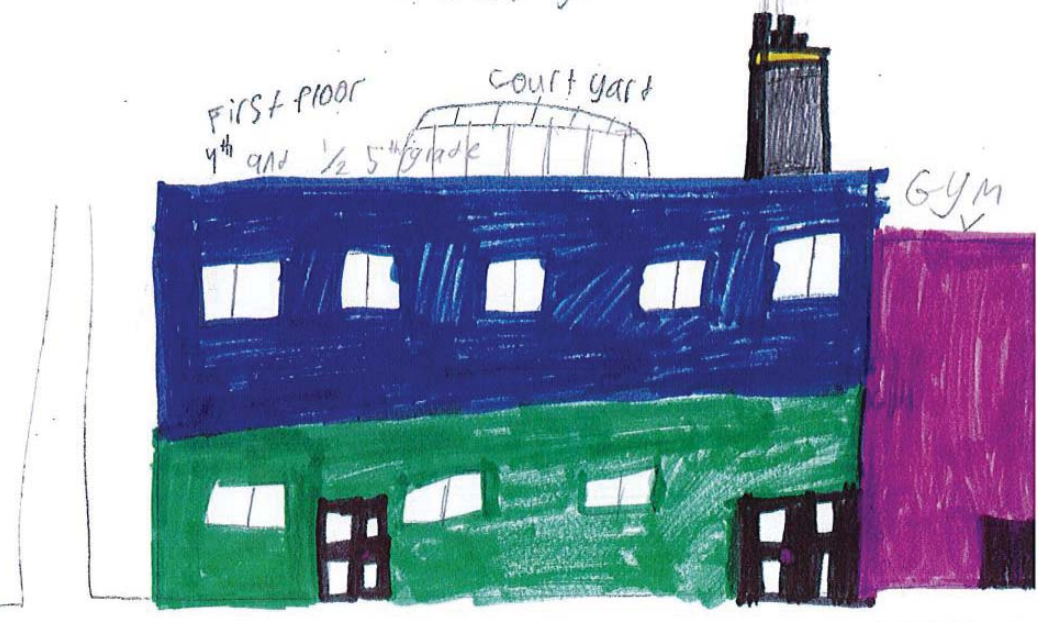


Raymond E. Shaw Elementary School Building Project Update

WHAT WE'VE BEEN UP TO

Students' Input

T2 Architecture gave a presentation to the Shaw Elementary Students to review the Design and Construction process and review examples of what learning spaces used to be like and how they are in today's 21st Century Schools. It concluded with T2 asking each student to draw or write about a space or spaces that are important to them for their school. The students have some great ideas.



Community Forum

On December 4th the Building Committee held a Community Forum to introduce the Shaw School project and the Design Team. An overview of the current school conditions and needs was given and preliminary design options were presented and discussed. The next Community Forum will be held on January 30th and will include design updates.

Exploring Design Options

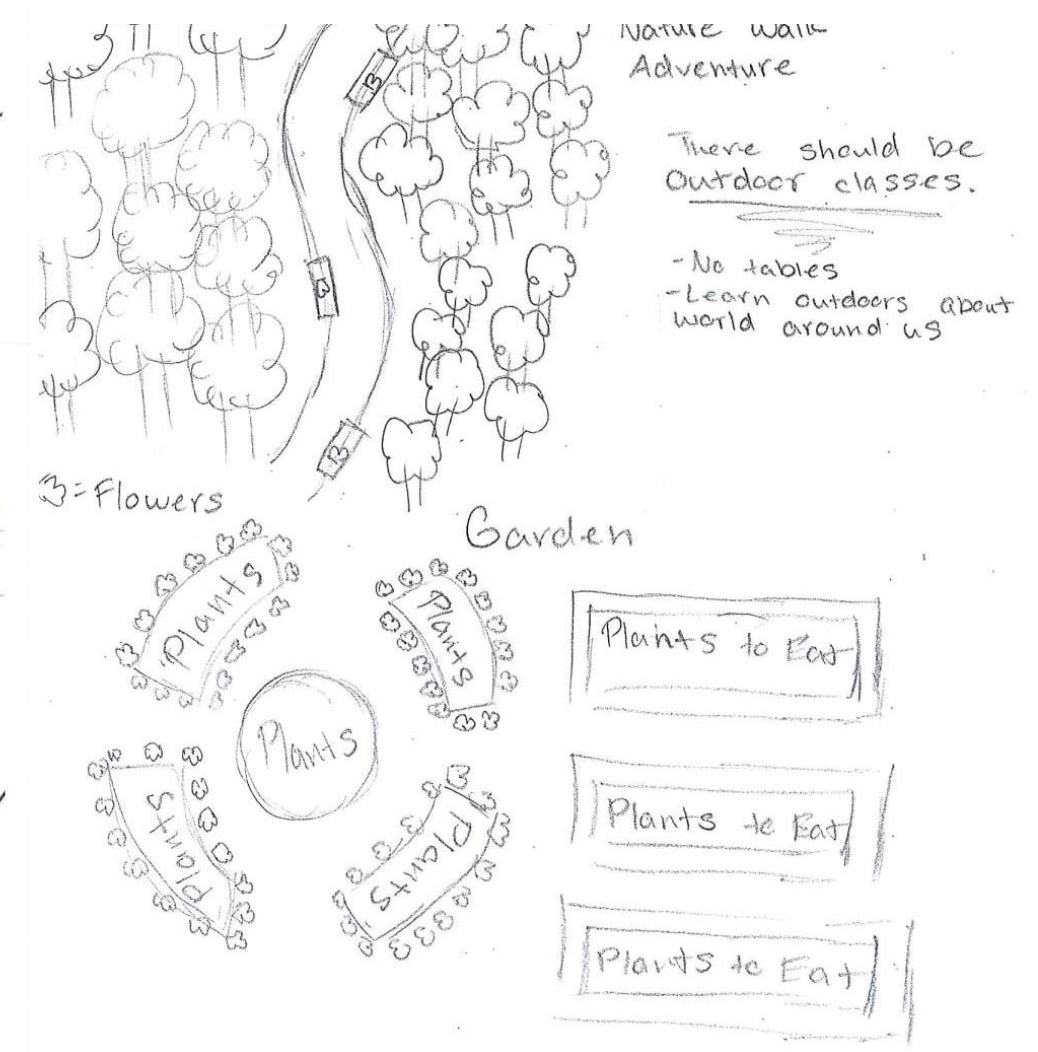
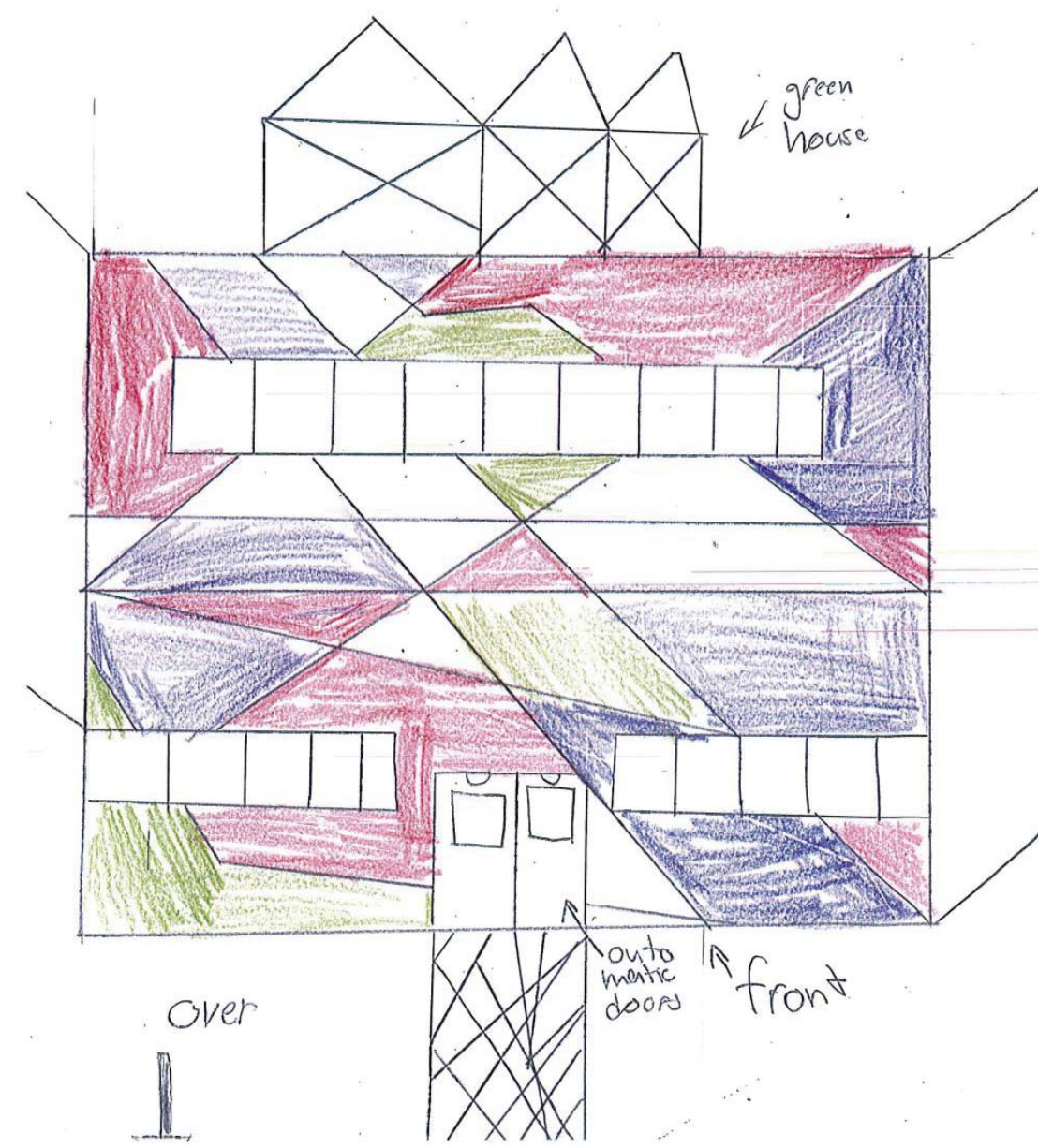
The Design Team, the District and the Building Committee have been further exploring the design options. Building massings are being developed and the floor and site plans are being refined.

Please join us Wednesday January 30th at the Community Forum to learn more about these options!
6:30 p.m. at Millbury Jr./Sr. High School Media Center

WHAT'S UP IN JANUARY?

Selecting a Preferred Design Option

The Building Committee will select a Preferred Design Option to move the project into the next phase. Floor plans, site plans, and building massings will be further developed to provide cost estimates for each option. The Building Committee and Design Team will then develop a matrix to help guide them in selecting a Preferred Option.



JOIN US!

UPCOMING JANUARY MEETINGS:

Wed. 1/16/19 Building Committee Meeting 6 p.m. - Review Design Options and Building Systems

Wed. 1/30/19 Building Committee Meeting 6 p.m. - Design Update

Wed. 1/30/19 **DESIGN UPDATES COMMUNITY FORUM - 6:30 p.m. at Millbury Jr./Sr. High School Media Center**

FOR MORE INFORMATION

Visit www.millburyschools.org

or

email Superintendent Greg Myers at gmyers@millburyschools.org